

VR NeuroLink AI

Neurodiagnostics, measurable rehabilitation • both remotely and in clinics •
powered by virtual reality and artificial intelligence.


Startups for
Sustainable
Development



OUR TEAM



Raman Tsimafeyeu
Founder: CEO

Physiotherapist with **7 years** of experience and over **10 years** in business.



Mikita Susha
Co-Founder: Chief of R&D

10 years in game development, and 3 years in MedTech.



Andrei Belski
Co-Founder: Chief Legal Officer

Over **10 years** of experience in certification and IT compliance.



Gillian Berry
Advisor

25+ years in healthcare, CEO of PerCen Technologies, consultant at RCSI, ADAPT Trinity College Dublin.



Artem Berman
Strategic Adviser

15+ years of global enterprise software leadership and led StarWind to a \$36M acquisition.



Iryna Maryenko
Chief of Science

Doctor of Medical Sciences. Over **20 years** of clinical experience. Author of 6 patents and more than 200 scientific publications.



Maria Mozheiko
Medical Expert

PhD. Over **10 years** of experience in rehabilitation and sports medicine.



Yeuheni Akimau
Medical Expert

Sports medicine physician and clinical pharmacologist. **15 years** of medical practice.



Catherine Pazhitnykh
Chief of Marketing

Over **17 years** of experience in strategic and operational marketing.



Elena Podlubnaia
Chief Financial Officer

15 years in financial management, 50+ systems implemented for national and international companies.

THE PROBLEM

Millions suffer.
Few get access to rehabilitation.

1B+

with CNS and Balance disorders

Source: WHO, Global Burden of Disease 2021-2024, EAN 2025

~10%

get rehab

(WHO, BMC)

CURRENTLY IN THE MARKET

≈80% Subjective Care
(market sizing + triangulation analysis)

- Doctors **make mistakes**
- Rehabilitation outcomes **cannot be justified**
- It's **unsafe for the patient**



The Gold Standard: "Stabilometric Platforms"

- Expensive: **\$10K to \$500K**
- **Require** trained specialists
- **Not designed** for mass use



XR/VR and remote rehab solutions:

- Still rely on **traditional** diagnostics
- **Rehabilitation** in them **remains subjective.**



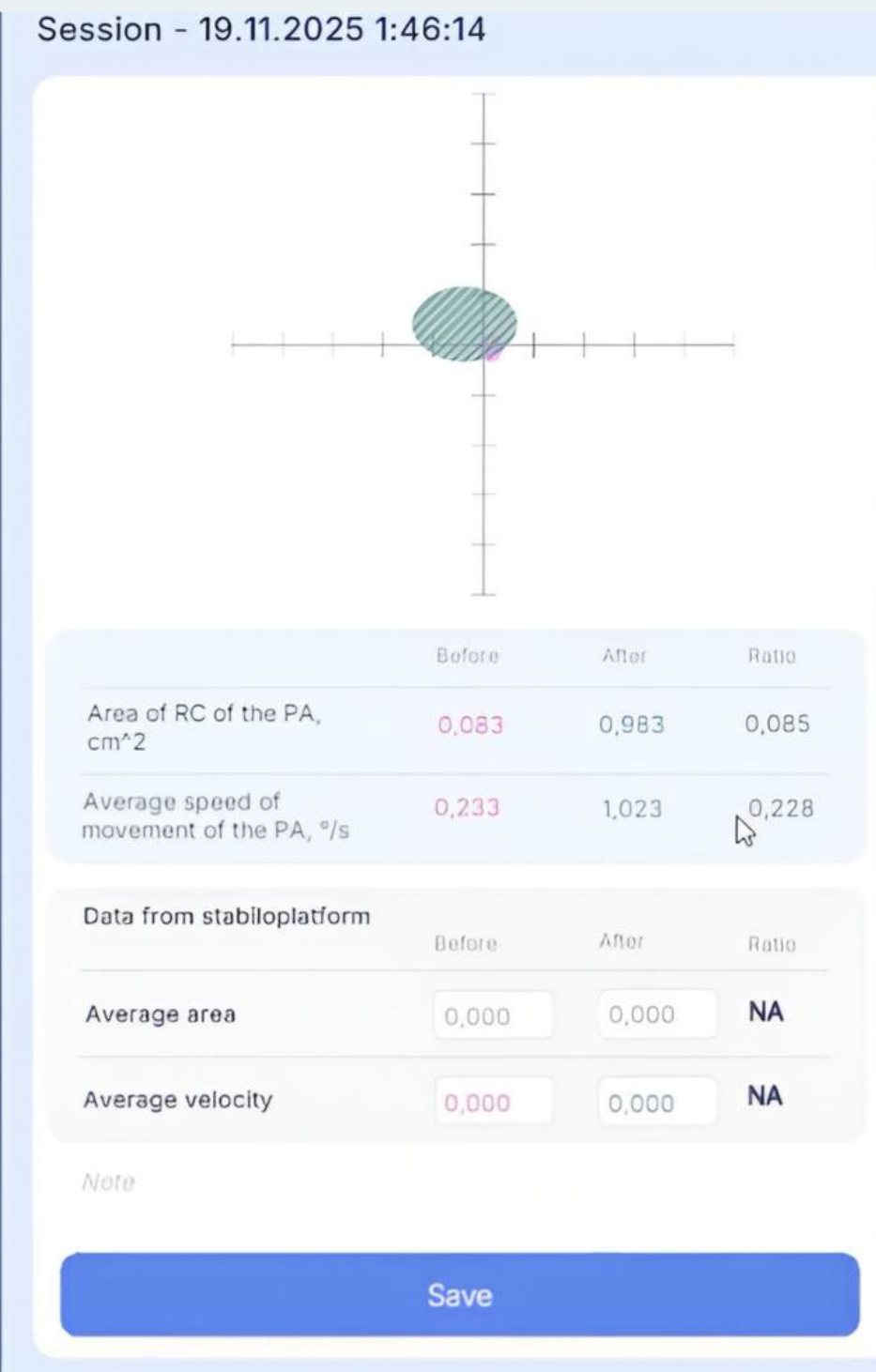
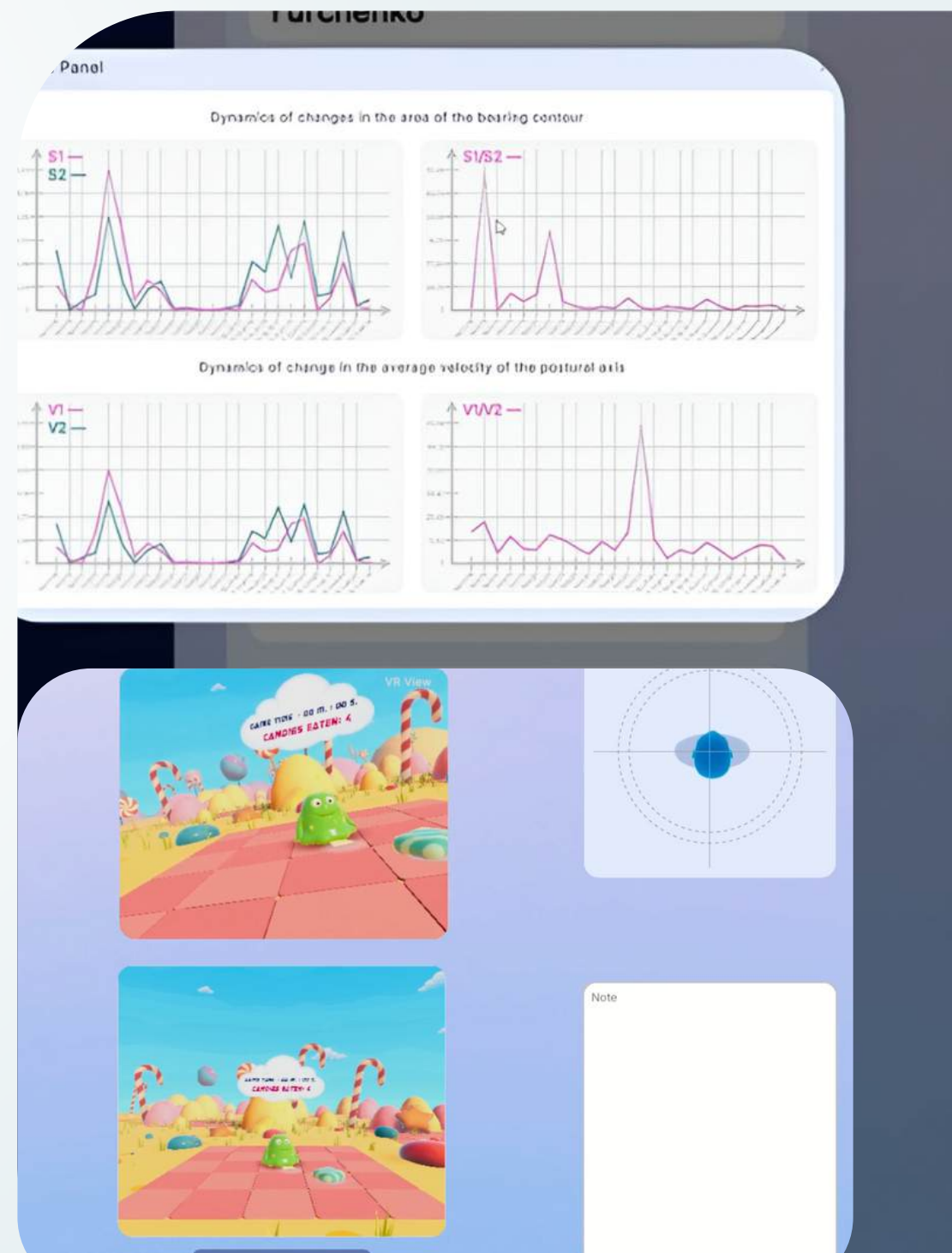
[MindMaze](#) [Stroll](#) [XR-Health](#)
Full list: <https://goo.su/9luzfr>

SOLUTION - SOFTWARE

THE **WORLD'S FIRST** VR SOLUTION THAT COMBINES GOLD-STANDARD NEURODIAGNOSTICS AND REHAB IN ONE SYSTEM

- **Balance and CNS** diagnostics & rehabilitation
- **Proprietary** algorithm
- Starts from **day one** (Bed or a wheelchair)
- **Wide application:**
Stroke, Parkinson's, ataxia, TBI, and more

<https://youtu.be/lcCNb-2lOuE>



CLINICALLY VALIDATED



1,000+

patients treated



Protocol

approved



6

clinical sites



1

Patent (EAEU)



PROGRAMS


Startups for
Sustainable
Development



CLINICAL, UNIVERSITY AND HARDWARE PARTNERS



Research & presentations at international conferences & symposia.

SCIENTIFICALLY BACKED

A series of scientific studies has been conducted, confirming the effectiveness of **our method**.

Key results:

- **2×** faster recovery
- **50%** better balance
- **30%** higher coordination
- QoL **+20%**, dropouts **↓ 70%**



Full list: <https://goo.su/qbU0kfl>

WHAT'S NEXT FOR OUR SOLUTION

REMOTE REHAB AND AI AUTOMATION OF CLINICAL WORKFLOWS

- **Remote** rehabilitation, monitoring and diagnostics
- **Automated** rehab plans
- **Saves** specialists about **30%** of their time each day
- **Boosts** specialist income
- **Expands** patient access to rehabilitation

The dashboard is divided into several sections:

- Calendar:** A monthly calendar for September 2019. The 17th and 16th are highlighted in purple.
- Sessions:** A list of sessions with durations: 4 min, 6 min, 6 min, 3 min, and 3 min. The last session is highlighted in red.
- Progress:** Three line charts showing progress for Psychology, Neurology, and Sport in Sep. 2019.
- Patient info:** Information for Hannah Spiner, including date of birth (1975 February 17), height (5.7), and foot size (8). A "Rehabilitation group" is also listed.
- Diagnosis:** A section with a placeholder text: "Add pattern of diagnosis forget personalitess dasatslics".
- Navigation:** Buttons for "Hide info", "Edit", and "Start Game".

BUSINESS MODEL - B2B

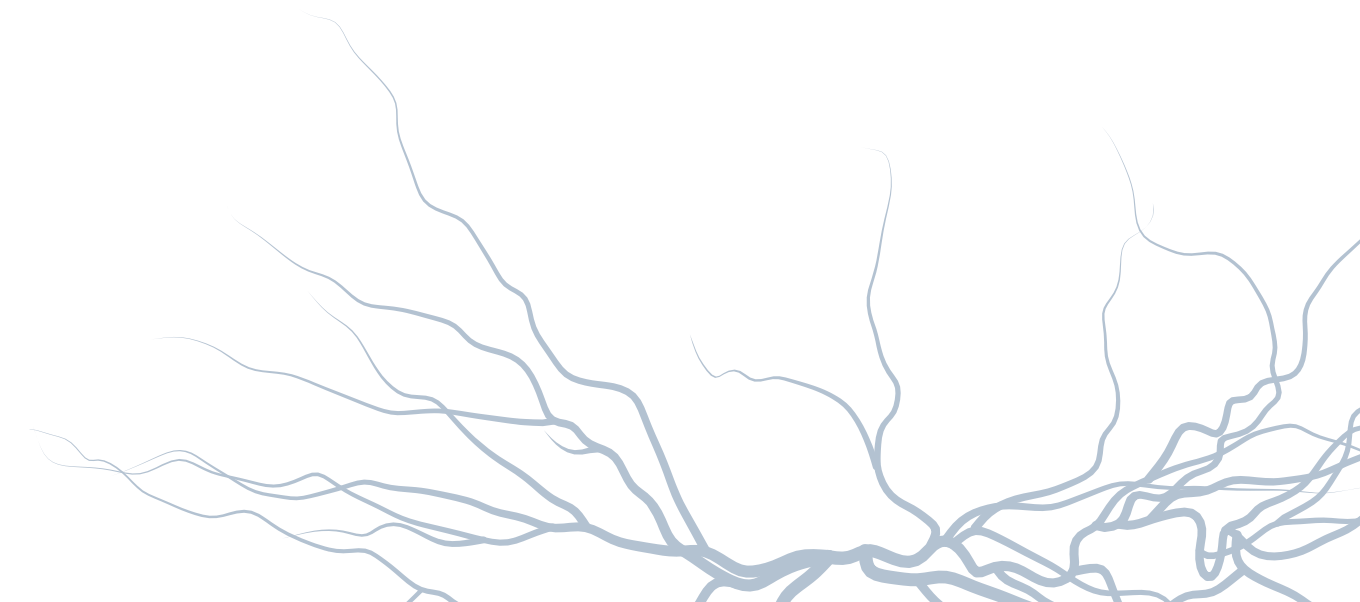


CORE - **Offline** rehab and diagnostics

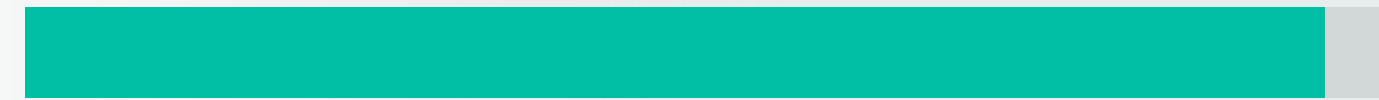
- **Headsets:**
€50/month rental or €500 purchase
- **Pay-per-use:**
€1.5/session

CLOUD - **Remote** rehabilitation and **Workflow automation** for specialists

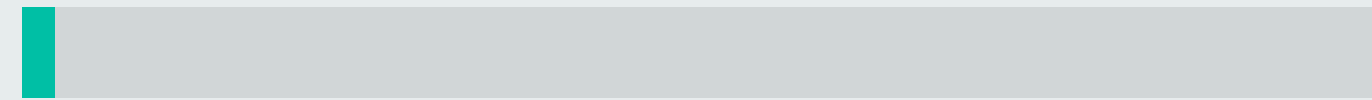
- **Subscription-based platform:**
€199/month



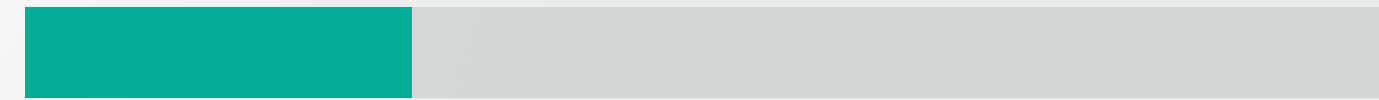
MARKET OPPORTUNITY



TAM EU ~€13.4B



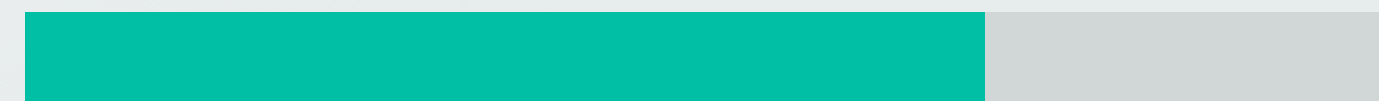
SOM DE ~€15M



776,000 relevant doctors EU
physiotherapists, neurologists, rehab specialists



1 doctor: ~**80** patients/month

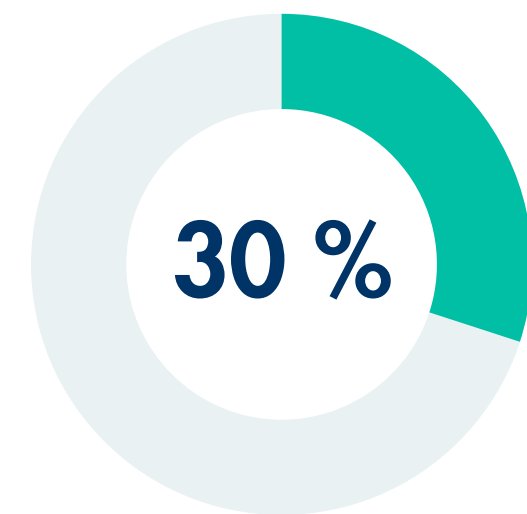


1 patient: ~**12** sessions/month



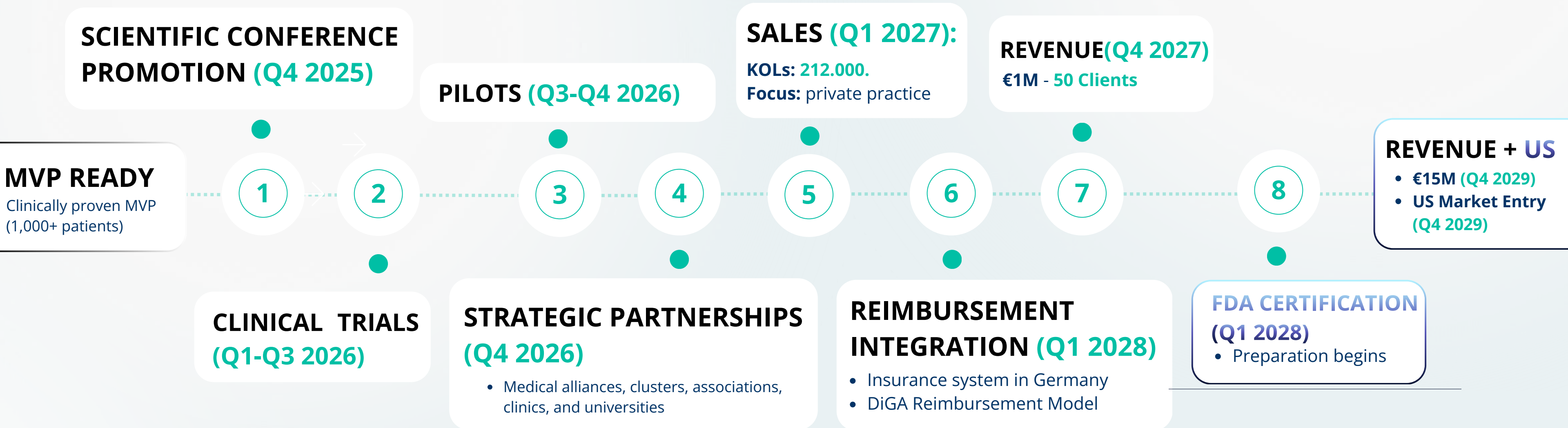
Market Growth

VR in Medicine CAGR: ~**30%**



GO TO MARKET

Germany: \$374.6M VR healthcare (16% CAGR)



RAISING €1.5M 24 months runway

THE ASK

- Product development - 45%;
- Core Team Salaries – 30%;
- CE certification - 14%;
- Marketing & Promotion – 7.5%;
- Overheads – 3.5%

Q1 2026 - Q1 2027

Product development & CE certification - **in progress**

1

MVP READY

Clinically proven MVP (1,000+ patients) - **NOW**

2

Q1 2027

- MVP of remote platform without AI module - **Done**
- MDR2A & Patent - **Done**
- **First sales without AI module - Q1 2027**

3

Q3 2026 - Q4 2027

- Expansion to 3 nosologies certification - **Done**
- Full development of remote platform with AI module - **Done**
- Certification of the platform with an AI module - **Done**
- **Sales with AI module - Q4 2027 - Start**

6

Q4 2028

Expansion to 6 nosologies
€15M revenue
1,700 doctors

7

Q4 2031

Expansion to 9 nosologies
€244M revenue
27,200 doctors

8

Q4 2032

Acquisition: Philips, Siemens, GE, Meditouch
Company valuation: **€1.2B**

PROJECT SELF-FUNDED TO DATE

CALL TO ACTION



**JOIN US — LET'S
CHANGE
REHABILITATION
TOGETHER!**

ceo@vrworldmedtech.pl